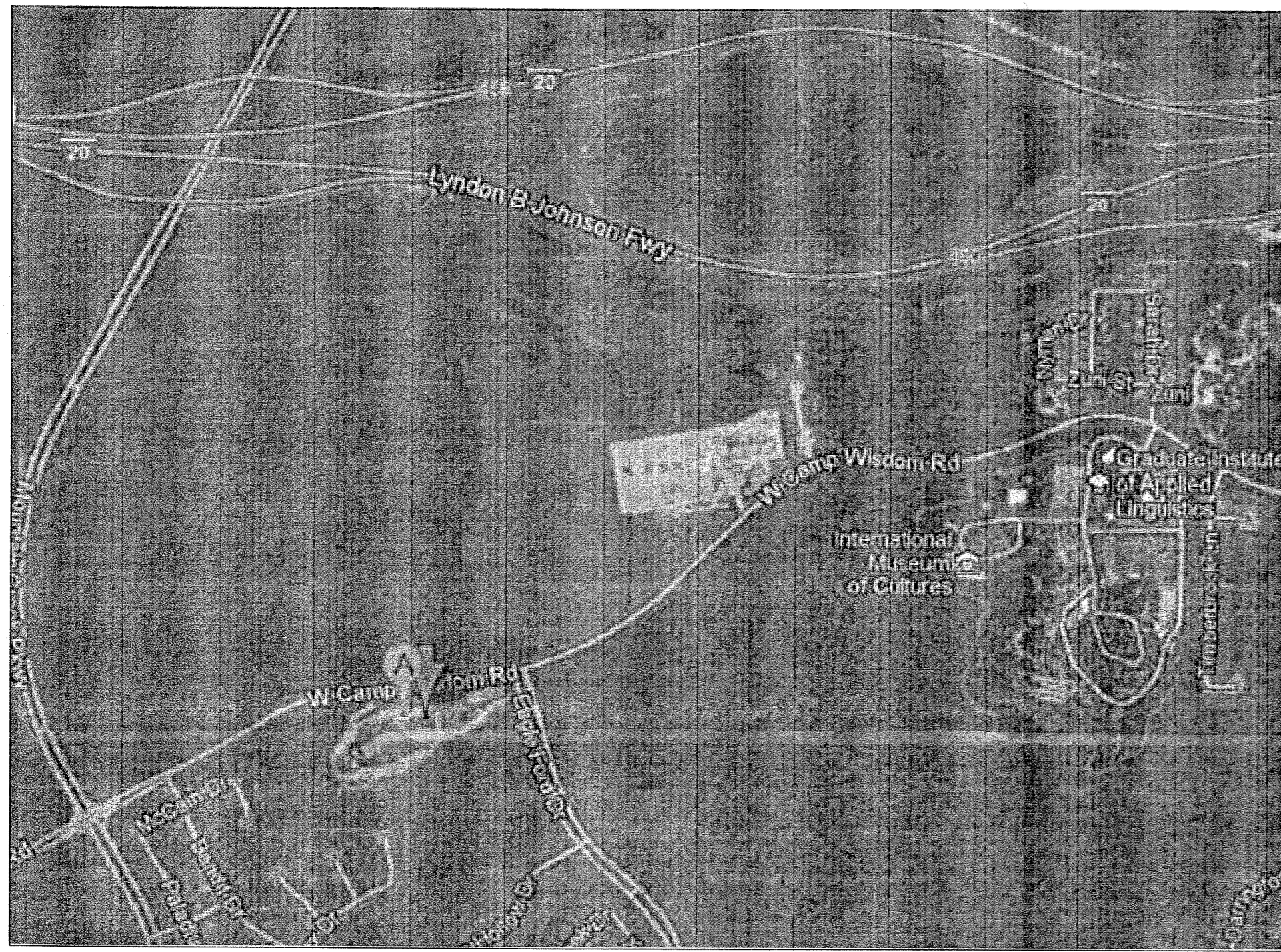


VICINITY MAP



- KEYED NOTES:**
- 1 NEW LOCATION FOR CRUSHED GRANITE WALKING PATH. REMOVE EXISTING THAT IS OUTSIDE OF PROPERTY LINE.
  - 2 REMOVE EXISTING VOLLEYBALL COURT.
  - 3 THE NEW CRUSHED GRANITE WALKING PATH TO EXISTING WALK PATH.
  - 4 REMOVE EXISTING STONE WALL THAT IS OUTSIDE OF PROPERTY LINE AND REBUILD AS SHOWN. MATCH EXISTING SHORT STONE WALL TO BE REMOVED.
  - 5 BLACK 6'-0" HIGH VINYL COATED CHAIN LINK FENCE
  - 6 NEW OUTDOOR WORK OUT EQUIPMENT MOUNTED CONCRETE SLAB.

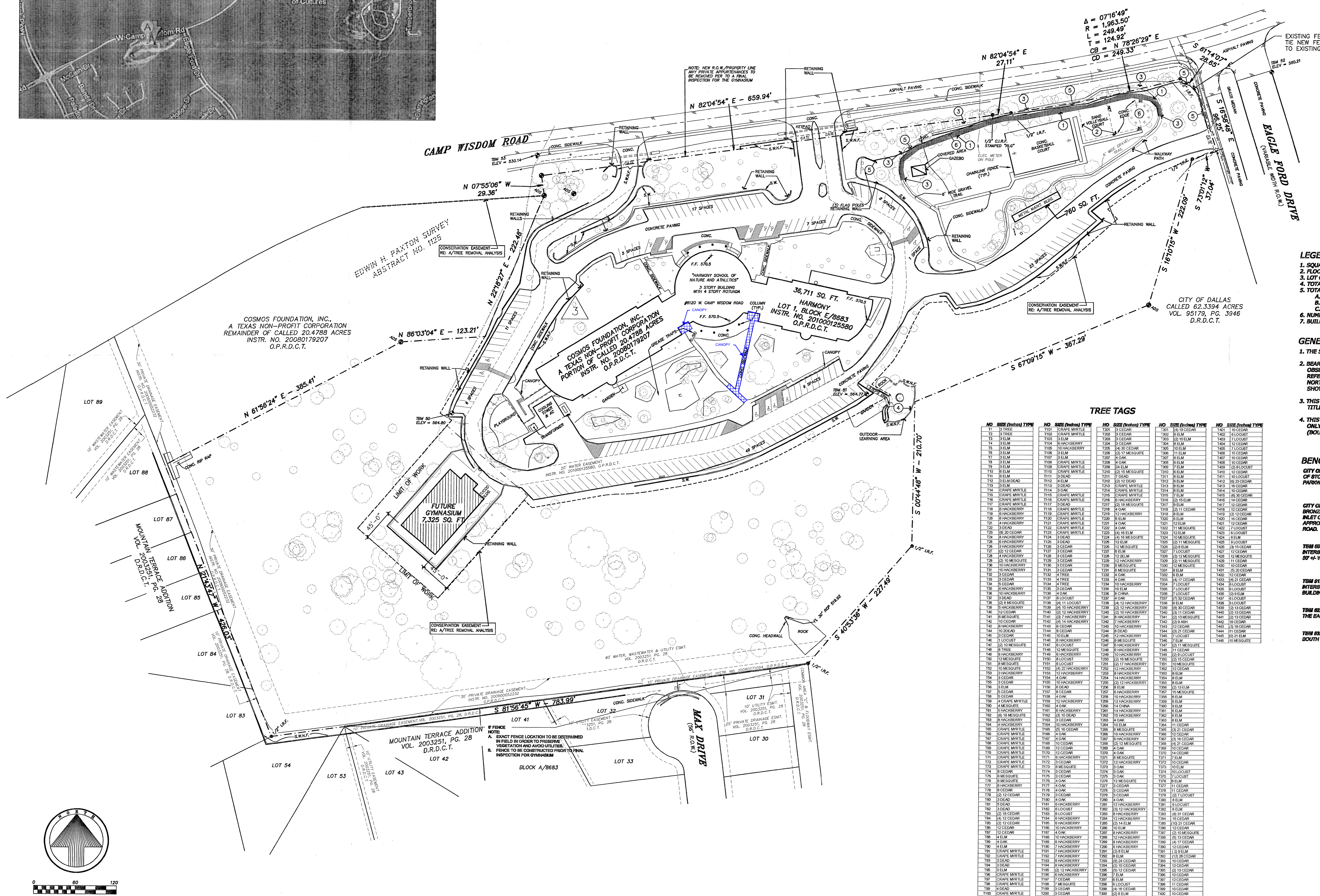
ARCHITECT  
PRK ARCHITECTS, INC.  
11 GREENWAY PLAZA SUITE 8210  
HOUSTON, TEXAS 77046-1104  
(713) 866-0008

STRUCTURE ENGINEERS  
PRK ARCHITECTS, INC.  
11 GREENWAY PLAZA SUITE 8210  
HOUSTON, TEXAS 77046-1104  
(713) 866-0008

M.E.P. ENGINEERS  
PRK ARCHITECTS, INC.  
11 GREENWAY PLAZA SUITE 8210  
HOUSTON, TEXAS 77046-1104  
(713) 866-0008

CIVIL ENGINEERS  
PRK ARCHITECTS, INC.  
11 GREENWAY PLAZA SUITE 8210  
HOUSTON, TEXAS 77046-1104  
(713) 866-0008

TECHNOLOGY  
PRK ARCHITECTS, INC.  
11 GREENWAY PLAZA SUITE 8210  
HOUSTON, TEXAS 77046-1104  
(713) 866-0008



**LEGEND**

1. SQUARE FOOTAGE OF LOT = 770,640.5 S.F.
2. FLOOR AREA OF BUILDING SPACE = 47,054 S.F.
3. LOT COVERAGE = 6.11%
4. TOTAL NUMBER OF CLASSROOMS = 31
5. TOTAL NUMBER OF CLASSROOMS PER GRADE LEVEL:  
A. HIGH SCHOOL = 5  
B. MIDDLE SCHOOL = 12  
C. ELEMENTARY SCHOOL = 14
6. NUMBER OF PARKING SPACES = 146
7. BUILDING HEIGHT = 82'-3"

- GENERAL NOTES**
1. THE SURVEYOR DID NOT ABSTRACT THE SUBJECT TRACT.
  2. BEARINGS ARE BASED ON GRID GEODETIC NORTH, OBTAINED BY OBSERVATIONS WITH A GLOBAL POSITIONING SYSTEM, AND REFERENCED TO THE TEXAS STATE PLANE COORDINATE SYSTEM, NORTH CENTRAL ZONE, NAD 83 COORDINATES. DISTANCES SHOWN HEREON ARE GRID.
  3. THIS SURVEY WAS PREPARED WITHOUT THE BENEFIT OF A TITLE REPORT.
  4. THIS SURVEY WAS PREPARED FOR TOPOGRAPHIC PURPOSES ONLY. THIS SURVEY IN NO WAY REPRESENTS A LAND TITLE (BOUNDARY) SURVEY.

**BENCHMARKS**

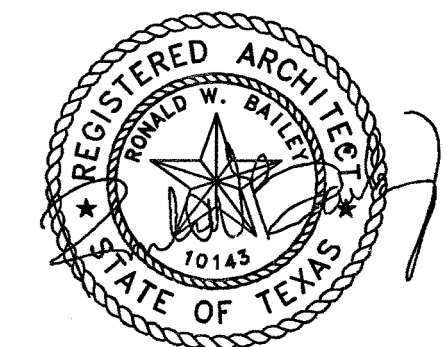
CITY OF DALLAS BENCHMARK 11A-D-2: A SQUARE CUT AT THE CENTER OF STORM SEWER INLET ON THE NORTH SIDE OF MOUNTAIN CREEK PARKWAY, 0.30 MILES WEST OF EAGLE FORD ROAD. ELEV = 891.638 (NAVD 89)

CITY OF DUNCANVILLE G.P.S. MONUMENT 4-A: 4" DIAMETER DOMED BRONZE DISK SET ON THE NORTHEAST CORNER OF A STORM DRAIN INLET ON THE WEST SIDE OF THE MEDIAN ON CLARK ROAD APPROXIMATELY 400' SOUTH OF THE CENTERLINE OF W. CAMP WISDOM ROAD. ELEV = 769.12 (NAVD 89)

**TREE TAGS**

NO.	SIZE (DBH) TYPE	NO.	SIZE (DBH) TYPE	NO.	SIZE (DBH) TYPE	NO.	SIZE (DBH) TYPE	NO.	SIZE (DBH) TYPE
101	12" RED BIRCH	201	12" COYNE WATTLE	301	12" CEDAR	401	12" CEDAR	501	12" CEDAR
102	12" RED BIRCH	202	12" COYNE WATTLE	302	12" CEDAR	402	12" CEDAR	502	12" CEDAR
103	12" RED BIRCH	203	12" COYNE WATTLE	303	12" CEDAR	403	12" CEDAR	503	12" CEDAR
104	12" RED BIRCH	204	12" COYNE WATTLE	304	12" CEDAR	404	12" CEDAR	504	12" CEDAR
105	12" RED BIRCH	205	12" COYNE WATTLE	305	12" CEDAR	405	12" CEDAR	505	12" CEDAR
106	12" RED BIRCH	206	12" COYNE WATTLE	306	12" CEDAR	406	12" CEDAR	506	12" CEDAR
107	12" RED BIRCH	207	12" COYNE WATTLE	307	12" CEDAR	407	12" CEDAR	507	12" CEDAR
108	12" RED BIRCH	208	12" COYNE WATTLE	308	12" CEDAR	408	12" CEDAR	508	12" CEDAR
109	12" RED BIRCH	209	12" COYNE WATTLE	309	12" CEDAR	409	12" CEDAR	509	12" CEDAR
110	12" RED BIRCH	210	12" COYNE WATTLE	310	12" CEDAR	410	12" CEDAR	510	12" CEDAR
111	12" RED BIRCH	211	12" COYNE WATTLE	311	12" CEDAR	411	12" CEDAR	511	12" CEDAR
112	12" RED BIRCH	212	12" COYNE WATTLE	312	12" CEDAR	412	12" CEDAR	512	12" CEDAR
113	12" RED BIRCH	213	12" COYNE WATTLE	313	12" CEDAR	413	12" CEDAR	513	12" CEDAR
114	12" RED BIRCH	214	12" COYNE WATTLE	314	12" CEDAR	414	12" CEDAR	514	12" CEDAR
115	12" RED BIRCH	215	12" COYNE WATTLE	315	12" CEDAR	415	12" CEDAR	515	12" CEDAR
116	12" RED BIRCH	216	12" COYNE WATTLE	316	12" CEDAR	416	12" CEDAR	516	12" CEDAR
117	12" RED BIRCH	217	12" COYNE WATTLE	317	12" CEDAR	417	12" CEDAR	517	12" CEDAR
118	12" RED BIRCH	218	12" COYNE WATTLE	318	12" CEDAR	418	12" CEDAR	518	12" CEDAR
119	12" RED BIRCH	219	12" COYNE WATTLE	319	12" CEDAR	419	12" CEDAR	519	12" CEDAR
120	12" RED BIRCH	220	12" COYNE WATTLE	320	12" CEDAR	420	12" CEDAR	520	12" CEDAR

HARMONY SCHOOLS OF NATURE NEW GYMNASIUM PHASE II COSMOS FOUNDATION



11 Greenway Plaza  
22nd Floor  
Houston, Texas 77046-1104  
Phone: 713-866-0008  
Fax: 713-961-4571

PROJECT NO. 11209  
DATE 07/06/13  
DRAWN BJT  
CHECKED BJT  
REVISIONS

ISSUE FOR CONSTRUCTION

A1.01 DEVELOPMENT PLAN

M201-021

SCALE: 1" = 60'-0"